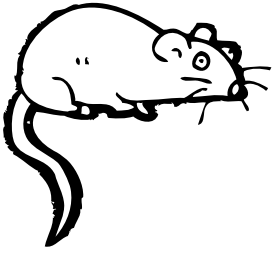


Name \_\_\_\_\_

Date \_\_\_\_\_

# Bubonic Plague Web Scavenger Hunt

1. What did acting troupes do when the plague came to London?
2. According to *Who Was William Shakespeare?*, how was the plague spread?
3. What have scientists recently proposed as another theory about how the Black Death spread?
4. How many people died from the bubonic plague?



5. What popular nursery rhyme is really about the plague?

6. Tell about one line from the nursery rhyme and how it alludes to the plague.

7. What were some symptoms of the plague?

8. What did households with an infected member have to put on their front doors?

9. What other tragedy helped to put an end to the London plague outbreak of 1665-1666?

10. List some things that people were advised to do to prevent the spread of the plague. Place an X beside the advice that didn't work.